

Board of Education Update

Operations Office – Facilities

February 9, 2023



Bruce Brown
Facility Project Manager



Fund 49 Current Status



Milestones

- VRHS Addition in design
- ECE/HMS/FES in design
- Modular B HMS in design
- Transportation 1B/1C in design
- VRHS Turf has begun
- Facility Master Plan consultant selected
- LED audit has begun
- SCHS Roof out to bid
- EES Parking Lot in design
- FMS Parking Lot in design

Challenges

- Schedule
- Budget
- Long lead items

Fund 49 List of Projects

- BRES Addition
- Elevations Middle School
- Bus Purchase
- Camera Upgrades District Wide
- IT Upgrades District Wide
- Transportation Center Phase 1A
- Transportation Center Phase 1B/1C
- ECE at HMS Modular A
- ECE at FES
- VRHS Education Wing Addition
- HMS Softball Field
- LED Upgrades District Wide
- SCHS Roof Replacement
- HMS Modular B Upgrade
- HMS Metal Building Athletics
- VRHS Turf & Track
- EES Parking Lot Lighting
- FMS Parking Lot & Lighting
- Facility Master Plan



VRHS Addition

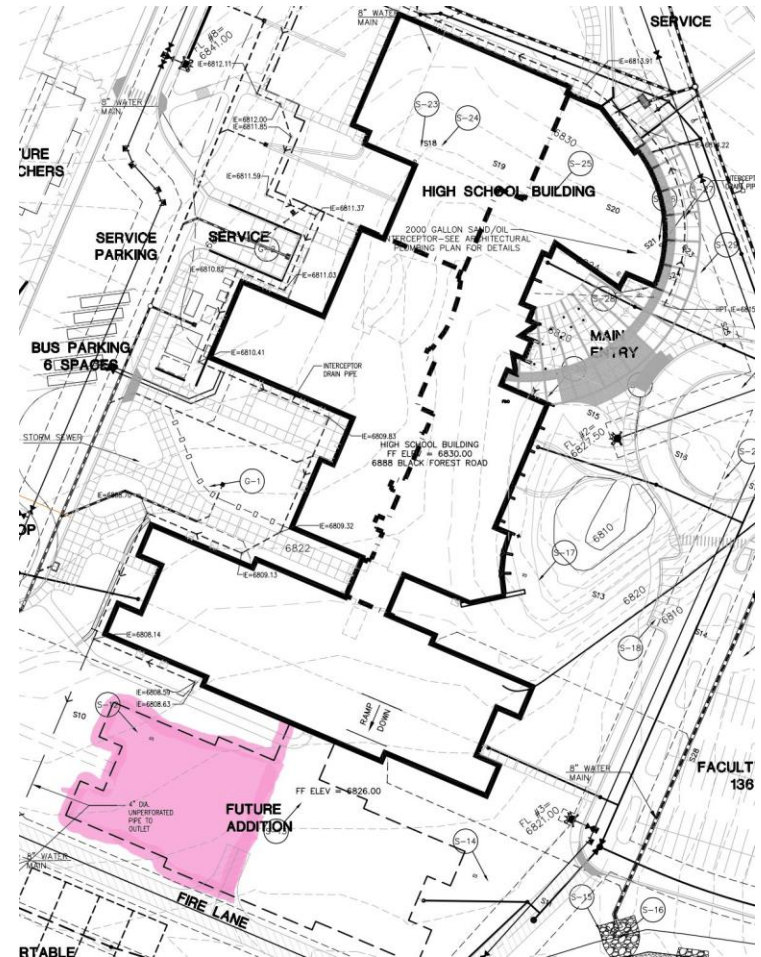


Milestones

- Approximately 30,000 sf addition
- Half Wing at south end of the school
- 2 story
- Currently in design
- Current completion fall of 2024

Challenges

- Long lead items
- Building location/elevation
- Budget
- Schedule





ECE at Horizon Middle School



Milestones

- 12,600sf remodel
- 8-9 new classrooms
- Over 200 student capacity
- Currently in design
- Completion fall of 2024

Challenges

- Long lead items
- HMS space usage
- Budget
- Schedule





BRES Addition



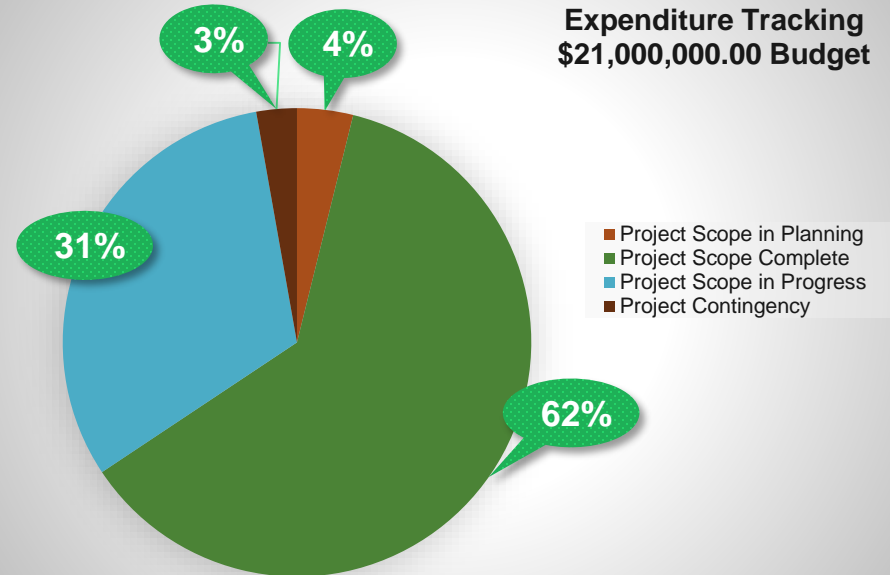
Milestones

- Painting has begun
- Flooring has begun
- Cabinetry has begun
- Construction is on schedule
- Substantial completion is May 18, 2023
- Project is in budget

Challenges

- No major challenges at this time
- *Live links to a time lapse video and pictures are provided in this presentation after the final slide*

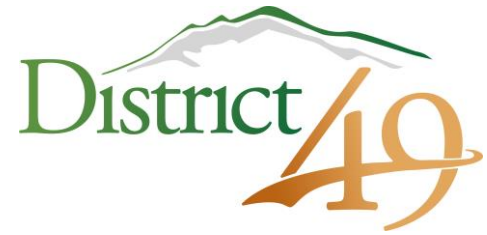
**Bennett Ranch
Expenditure Tracking
\$21,000,000.00 Budget**



Project Accounting	C Current Budget A+B	G Committed Cost D+E+F	H Projected To Complete	I Projected (Over)/Under C-(G+H)	J Incurred Costs
▶ A Land & Lease Cost	\$0.00	\$0.00	\$0.00	\$0.00	\$0.00
▶ B Owner Requirements	\$1,176,629.00	\$1,131,234.00	\$45,395.00	\$0.00	\$724,721.70
▶ C Construction	\$17,750,739.00	\$17,700,739.00	\$50,000.00	\$0.00	\$12,239,583.22
▶ D Permits, Utilities & Fees	\$28,554.00	\$11,554.00	\$17,000.00	\$0.00	\$11,554.00
▶ E Furniture, Fixture & Equipment	\$1,058,000.00	\$758,932.55	\$299,067.45	\$0.00	\$0.00
▶ F Technology	\$400,000.00	\$0.00	\$400,000.00	\$0.00	\$0.00
▶ G Contingencies & Escalation	\$586,078.00	\$0.00	\$0.00	\$586,078.00	\$0.00
Total	\$21,000,000.00	\$19,602,459.55	\$811,462.45	\$586,078.00	\$12,975,858.92



Transportation Center

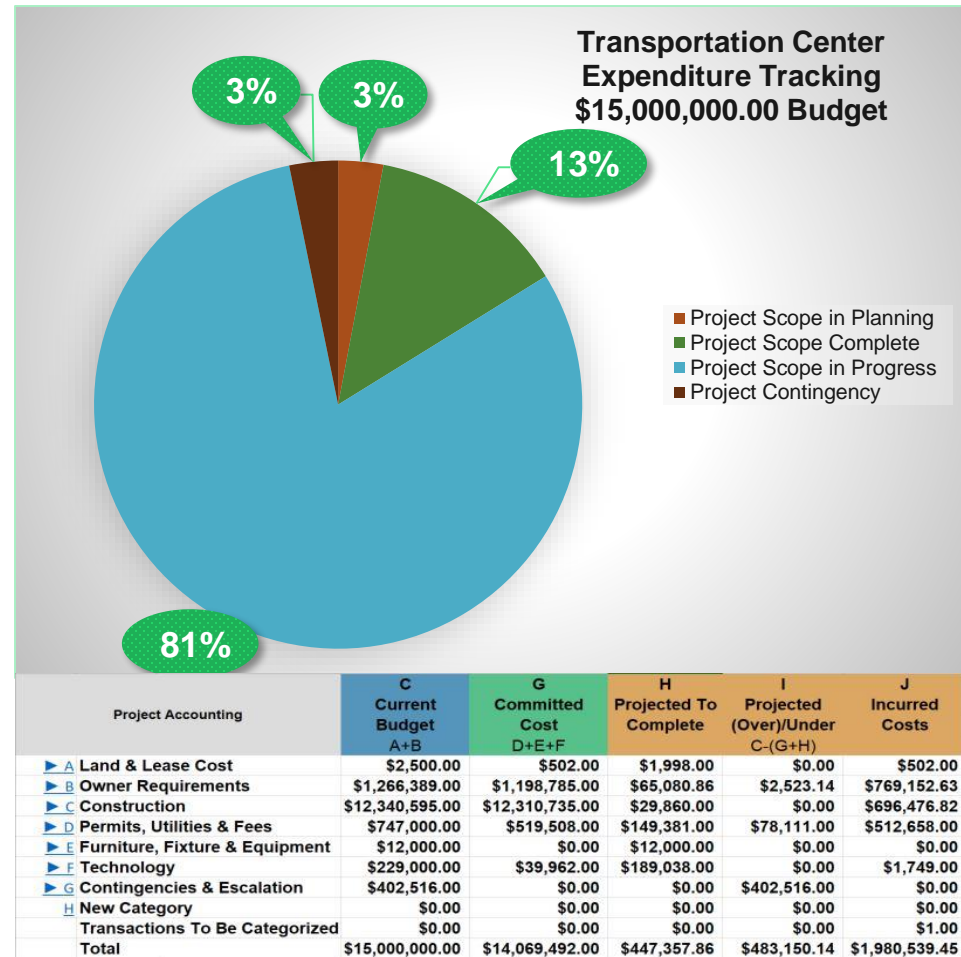


Milestones

- Metal building has been delivered
- Design of phase 1B/1C has begun
- Received County notice to proceed
- Received building permit
- Schedule & Budget TBD

Challenges

- Weather
- Long Lead items, Generator, Air Handler





Are there any questions?

Thank You!!

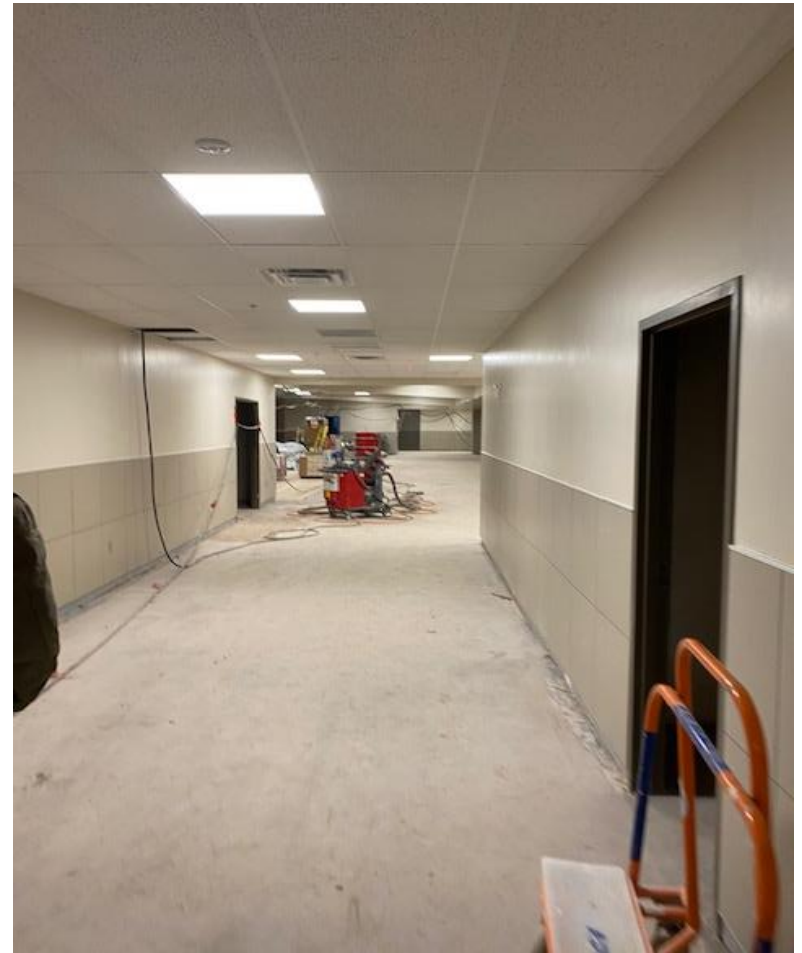


BRES Addition





BRES Addition





BRES Time Lapse/Flyover Links



- <https://ghphippscloud.egnyte.com/dl/G1S1llvgvj>

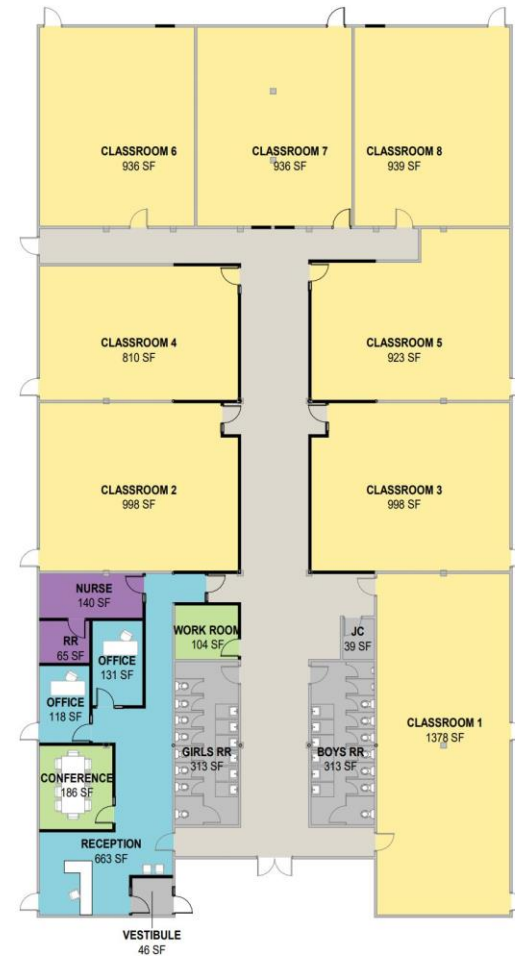
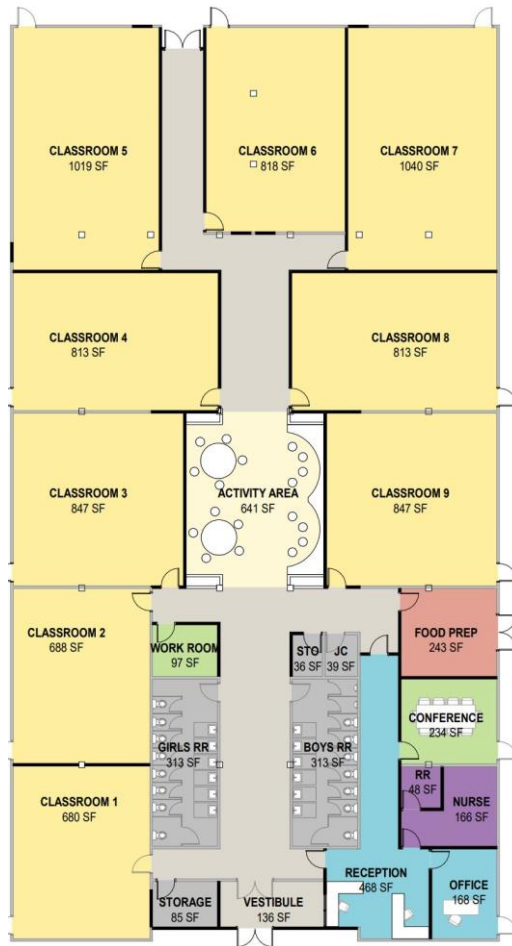


Transportation Center



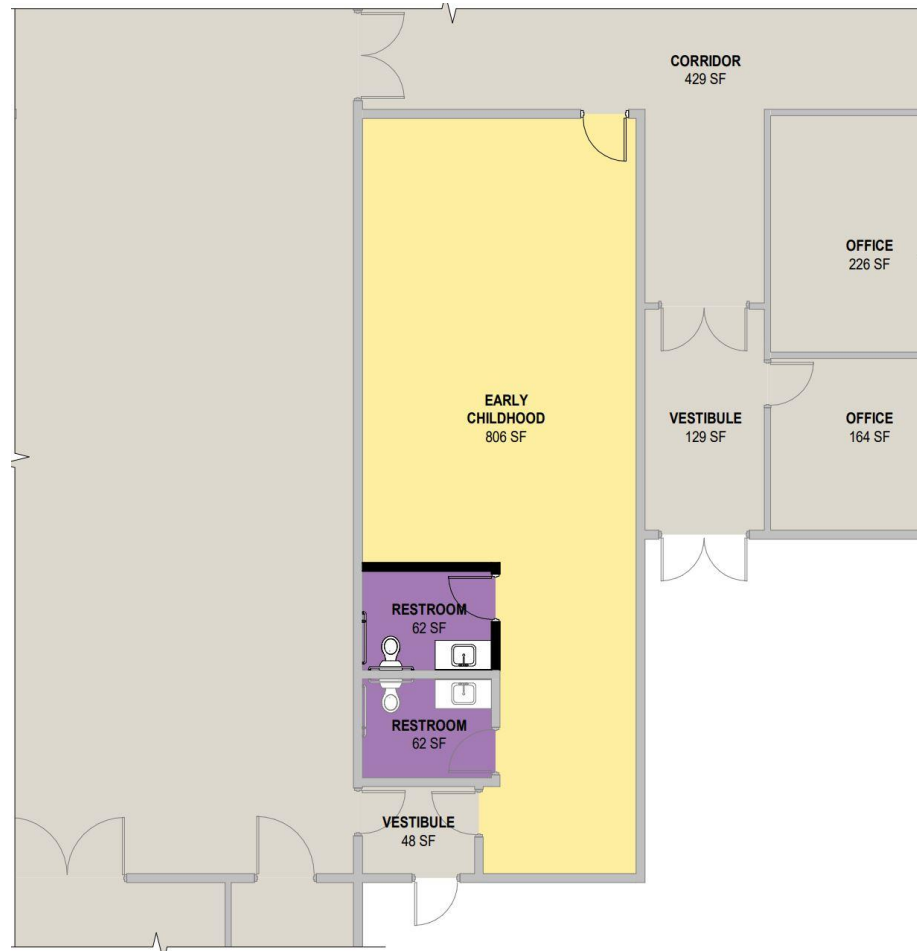


ECE Conceptual HMS





ECE Conceptual FES



Typical ECE Classroom

